



*Welcome to the Midland Post-Rock Bicycle Tour*

Pick your Route

(See info Below)

**IMPORTANT INSTRUCTIONS BEFORE YOU START**

**\*Please download the “Ride with GPS” APP ( free 30 day trial) on your smartphone for GPS directions. Search CzechHead 101 (road) or Dirty Wildora 101( gravel) depending on the ride you choose today.**

**\*Find the Midland Post-Rock Bicycle Tour page on facebook and give it a like for up to date information.**

**\*Ride the route and snap a photo of yourself on either route and hashtag #midlandpostrockbiketour on your photo and drop it on the event facebook page.**

**\*Stop by the Midland Railroad Hotel and pick up a patch/sticker(subject to change) of the route you pedaled**

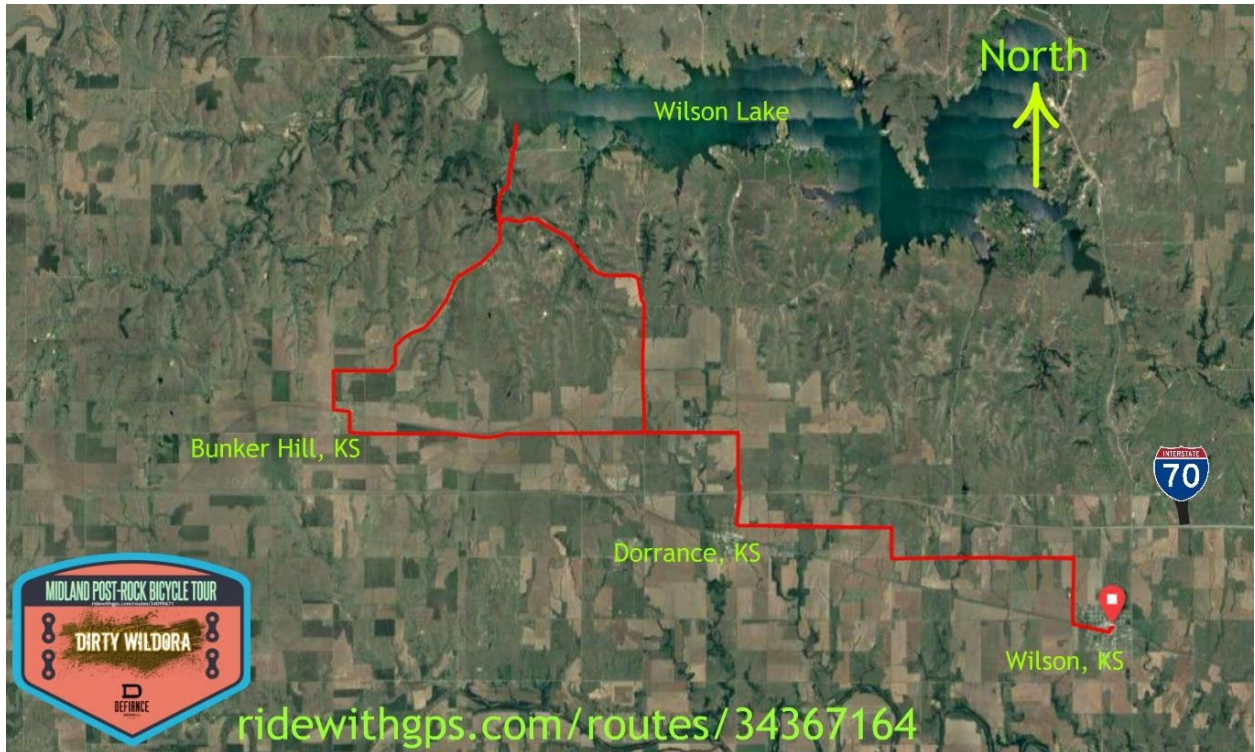


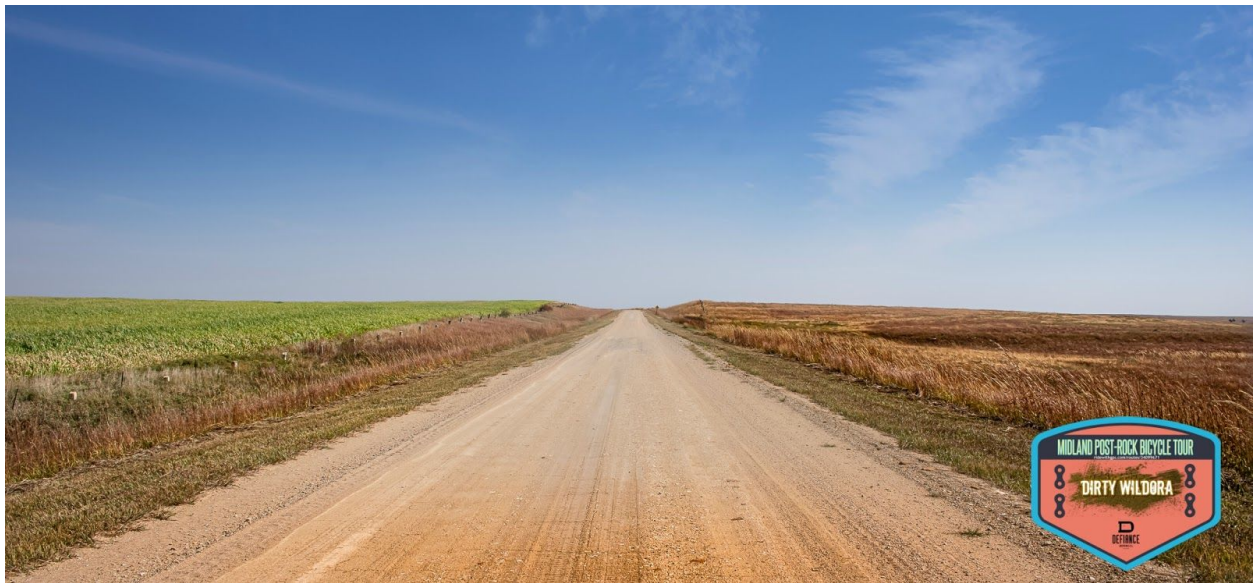
The Dirty Wildora is a gravel ride that will have you exploring the wide open spaces of Central Kansas. Wilson, Dorrance, and Bunkerhill Kansas. 40 miles of dirt roads and some black top along the way. This is approximately a 3 to 4 hour ride for moderate to experienced cyclists. Gravel tires are required for this route and riders need to bring plenty of water, snacks and at least a tire patch kit or 2 spare tubes.

Don't forget your camera, so you can snap a shot of yourself on the route. Post it on the facebook page [www.facebook.com/postrockbiketour](http://www.facebook.com/postrockbiketour) and hashtag #midlandpostrockbiketour. Stop by the Midland Railroad Hotel front desk for your

patch/sticker. (while supplies last)

We encourage riders to use the "Ride with GPS" app for The Dirty Wildora gps directions. <https://ridewithgps.com/routes/34367164> is the url for The Dirty Wildora 101.





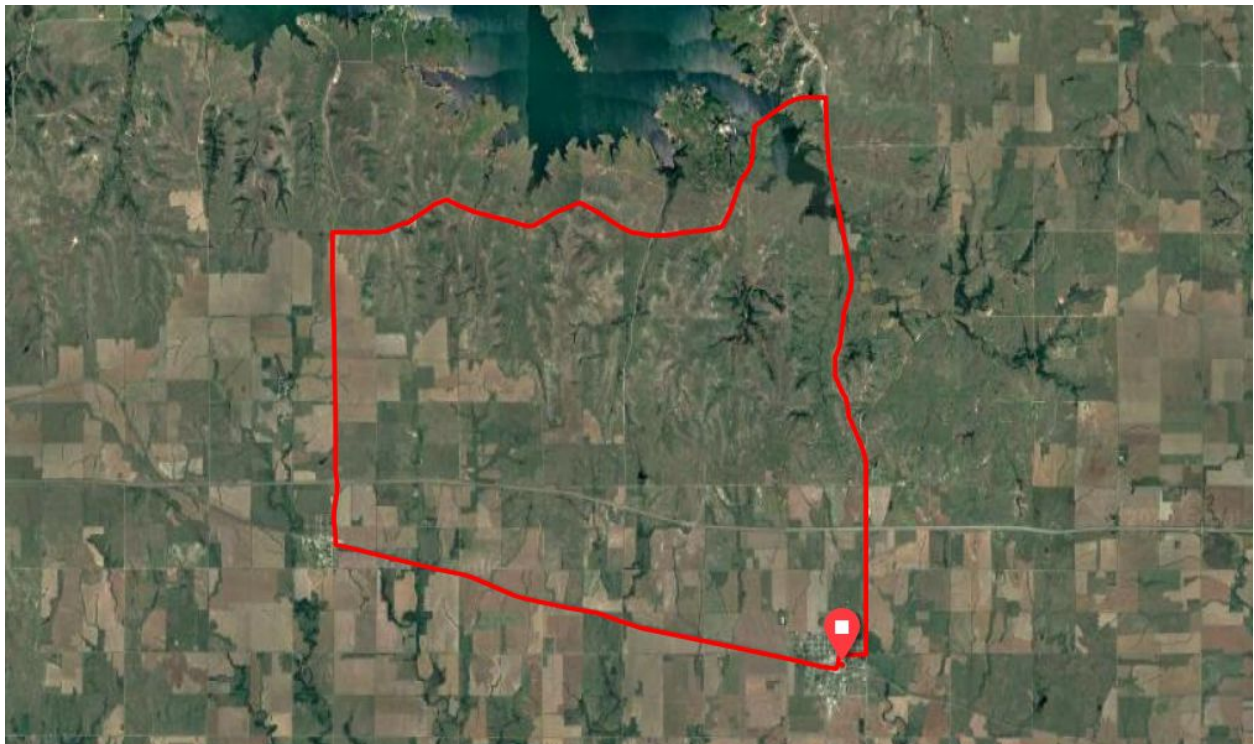


The CzechHead 101 is a road route that will have you exploring 25 miles of black top roads all the way to Wilson Lake and then to the Scenic 232 back to the Midland Railroad Hotel. Bring plenty of water and snacks. 2 spare tubes or a tire patch kit is suggested due to the rough road in places. There may be gravel in places and some traffic. Please use proper bicycle hand signals on turns and stops.

Don't forget your camera, so you can snap a shot of yourself on the route. Post it on the facebook page

[www.facebook.com/postrockbiketour](http://www.facebook.com/postrockbiketour) and hashtag #midlandpostrockbiketour. Stop by the Midland Railroad Hotel front desk for your patch/sticker. *(while supplies last)*

We encourage riders to use the "Ride with GPS" app for gps directions. <https://ridewithgps.com/trips/57406103> is the link to this route.





For current upto date info about these bicycle routes and events please like the facebook page. [www.facebook.com/postrockbiketour](http://www.facebook.com/postrockbiketour) or [www.midlandrailroadhotel.com](http://www.midlandrailroadhotel.com)